

## DR3543 Pressure and Temperature Integrated Transmitter



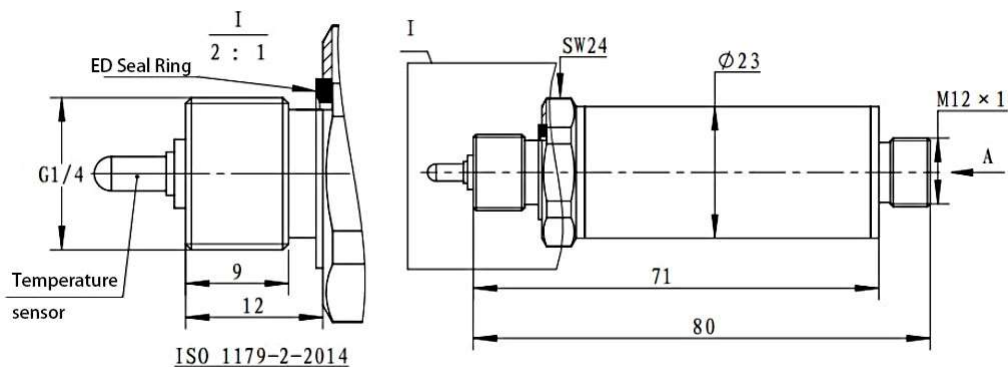
DR3453 is a multipurpose high precise transmitter, and incorporating a PT100 measuring element, the transmitter can measure temperature and pressure at the same time. Coupled with a dedicated pressure and temperature signal processing circuit, the transmitter is capable of high precision measurement. It is constructed of stainless steel providing excellent reliability. Additionally, the pressure transmitter provides multiple output option, such as dual 4-20 mA, 0.5V-4.5V or RS485. Our Combined Pressure and Temperature sensors have a wide range of applications where temperature and pressure measurement are required.

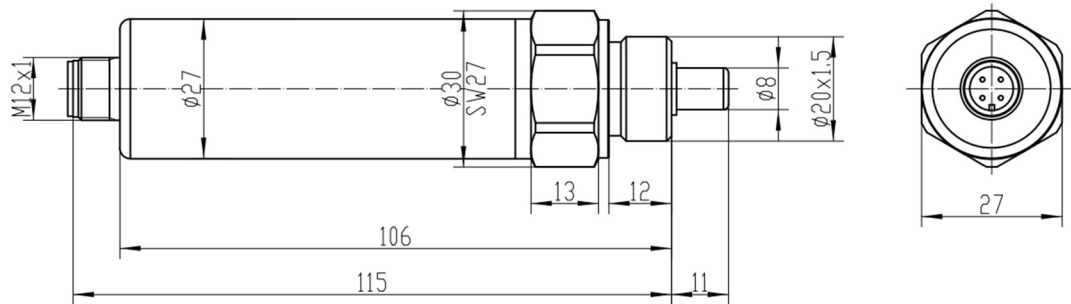
Fandesensor  
Website: [www.fandesensor.com](http://www.fandesensor.com)  
Email: [jiang@fandesensor.com](mailto:jiang@fandesensor.com)  
TEL/WhatsApp: +86 15902990387

## Technical Specs

Pressure range: -1bar...0bar~0.1bar...100bar  
 Temperature range: -40 ~ 80℃  
 Pressure type: gauge, absolute or sealed gauge pressure  
 Response time: 5ms  
 Over pressure: 150%FS  
 Compensated Temp.: -10 ℃ ~ + 70 ℃  
 Accuracy:  $\pm 0.5\%$ FS (pressure) /  $\pm 1\%$ FS (temperature)  
 Working temp.: -40 ℃ ~ + 80℃  
 Stability:  $\pm 0.20\%$ FS (1 year)  
 Storage Temp.: -40℃ ~ + 85℃  
 Output: 4mA~20mA DC(2-wire); 0.5~4.5V DC(3-wire);  
 Communication: RS485  
 Pressure interface: NPT1/2 NPT1/4 G1/2 G1/4 M20 \* 1.5  
 Load:  $\leq (U-8)/0.02\Omega$ (2-wire);  $\geq 10k$ (3-wire);  
 Insulation resistance: 100VDC@100M $\Omega$   
 Housing: stainless steel 304/ stainless steel 316  
 Protection level: IP65  
 Diaphragm: stainless steel 316L  
 Power supply: 12V~30VDC;

## Outline Construction (Unit: mm)





## Electrical Connection

RS485 Cable Wiring:

Black	V+
Brown	V-
Blue	RS485A
White	RS485B