

Temperature Transmitter DR4-432



Fandei Electronics Co.,Ltd.

www.fandesensor.com
info@fandesensor.com

1 Introduction

DR4-432 temperature transmitter can directly measure the surface temperature of liquid, steam, gas medium and solid in various production processes. A special temperature module is used to linearly correct the temperature sensing element and output standard analog signal or digital signal. It is widely used in petroleum, chemical industry, metallurgy, power station, light industry and other fields for different field temperature measurement requirements. It can also be used with regulators, recording instruments, computers, etc. to form a variety of measurement and control systems.

2 Specification

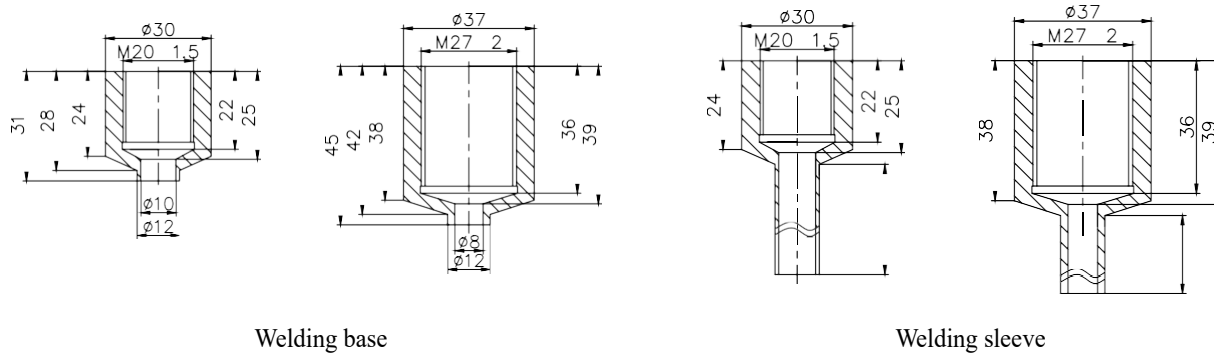
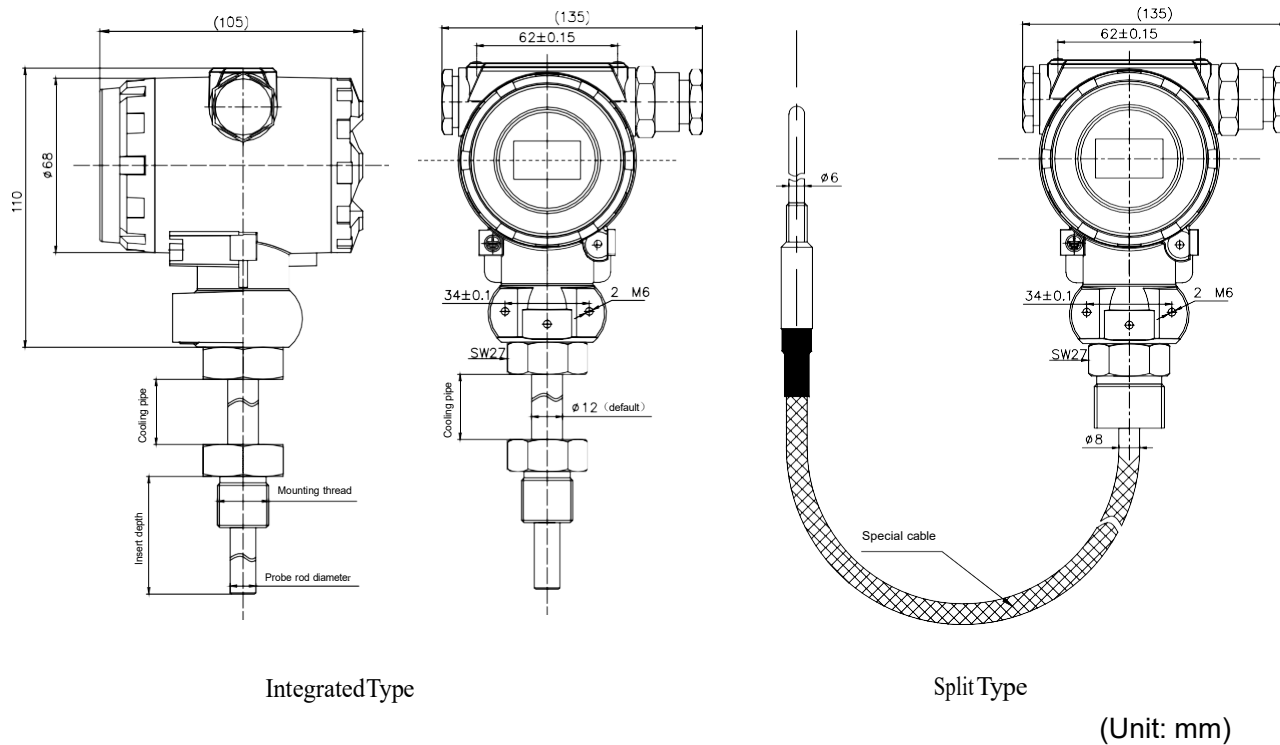
Parameters	Specification
Temperature range	-200~1000°C
Measurement accuracy	± 0.25% FS; ± 0.5% FS; ± 1.0% FS;
Power supply	13V ~ 36V DC
Output signal	4mA ~ 20mADC + Hart
Display	4 digits LCD
Working temperature	- 20 °C ~ 70 °C
Relative humidity	≤ 80% (25 °C)
Insulation resistance	≥ 20M Ω@50V DC
Flame proof mark	ExdIIBT6 Gb (including integrated and split)

3 Construction Material

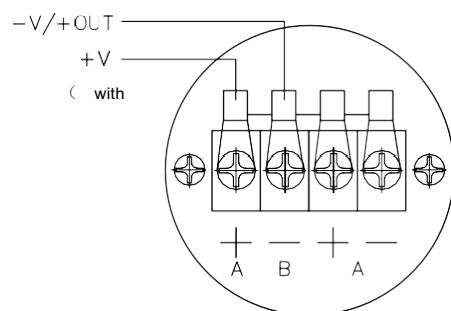
- Electronic housing: aluminum alloy
- Media wetted material: 304 stainless steel
316 stainless steel/others
- Temperature sensing element: PT100
- Display window: flameproof glass

LCD display may not be readable and LCD display updates will be slower at temperatures below -22 °F (-30°C).

4 Outline dimension



5 Electronic connection



2-wire current with HART

6 Order Guide

DR4-432 Temperature Transmitter										
DR4-432	Range		[X ~ Y℃] X, Y is the temperature upper limit and lower limit, unit ℃ .(full range -200℃ ~ 500℃)							
	L		Accuracy: ±1.0%FS (-200℃…0℃ ~ 500℃)							
	M		Accuracy: ±0.5%FS (-40℃…0℃ ~ 150℃)							
	N		Accuracy: ±0.25%FS (-20℃…0℃ ~ 105℃)							
	Code		Output Signal							
	EH		4mA ~ 20mA DC + HART							
	Code		Protection pipe diameter Unit: mm							
	6		Φ6							
	8		Φ8							
	12		Φ12							
	16		Φ16							
	612		Inner pipe Φ6, Outer pipe Φ12 (Φ12 welding casing)							
	816		Inner pipe Φ8, Outer pipe Φ16 (Φ16 welding casing)							
	Code		Installation Method and Process Connection (Split type: Header default)							
	I		Fixed thread installation, M20×1.5 male, thread length 18mm							
	II		Fixed thread installation, M27×2 male, thread length 32mm							
	III		Fixed thread installation, G1/2 male, thread length 20mm							
	IV		Fixed flange installation (DN10, DN15, DN20, DN32…)							
	V		Chuck installation (Clamp φ25.4, φ50.4…)							
	VI		Movable flange installation (DN10, DN15, DN20, DN32…)							
	VII		Fixed thread installation, M16×1.5 male, thread length 18mm							
	VIII		Fixed thread installation, G3/8 male, thread length 14mm							
	IX		Other standard thread sizes, please note							
	X		Fixed thread installation, NPT1/4 male, thread length 14mm							
	XI		Fixed thread installation, G1/4 male, thread length 14mm							
	Insert		Protection pipe insert depth (unit mm)							
	XXX		According to the actual length required (the product with a base installation is required, the insertion depth is the size except the base)							
	Code		Wetted part							
	1		SS304 (default)							
	2		SS316L							
	3		PTFE sleeve							
	Code		Display Type							
	A		LCD Display							
	B		NO Display							
	Code		Other							
	d		EXD (Exd II BT6Gb)							
	T		CCS							
	N		NULL							
	Code		Cooling pipe (unit: mm)							
	XXX(Integrated)		0mm [-50℃ ~ 100℃]							
			00mm[-200℃ ~ 150℃]							
			50mm[-200℃ ~ 500℃]							
	F		Split Type							
DR4-432	M	EH	8	I	100	2	A	d	150	the whole spec.

Note:

1. If there is no special requirement, except the probe part and explosion-proof housing, other materials are stainless steel 304.
2. For the content not included in the order guide selection, please consult our company for customization. This item is replaced by '*', and please explain them in the remarks or provide drawings.
3. Clamp type and surface mount type have a large deviation due to different environmental temperature. It is recommended to add heat preservation measures.
4. For example: DR4-432[0℃ ~ 200℃]L-EH-6-*-300-1-A-d-150
5. Description: DR4-432 temperature transmitter, accuracy $\pm 1.0\%FS$, range [0 ° C ~ 200 ° C], 4 ~ 20Ma/Hart output, probe outer diameter 6mm, installation method shown in the drawings, protection pipe insertion depth 300mm, protection tube material SS304, LCD display, flameproof, cooling part length 150mm.