

DR3463 Wireless Pressure Transmitter --Manual

I: Precautions

1. Check packaging, appearance, model, and specifications upon receipt.
2. Install in a location avoiding direct sunlight, rain, and temperatures above 65°C.
3. Follow the installation guide for proper connection.
4. Powered by lithium batteries; some models support power supply.
5. Allow a few minutes for stable output after installation and power-on.
6. Contact after-sales technicians for any abnormalities unless you can adjust the product.
7. Secure front and rear covers after switch operations to prevent moisture ingress.

II: Warning

1. Warranty does not cover losses from improper operation.
2. The company is not liable for losses beyond the product itself.
3. The manual may be updated without notice.
4. Customized products may differ from the manual.

III: Overview

This series of wireless digital pressure gauges is a low-power, lithium battery-powered instrument with wireless transmission capabilities. It features an explosion-proof alloy aluminum shell, a 304 stainless steel connector, a full-screen LCD display, and a high-precision pressure sensor for accurate real-time pressure display. The product offers high precision, excellent long-term stability, and various wireless transmission methods via 4G/NB networks to upload on-site pipeline pressure data to the cloud. It includes real-time reporting, high/low pressure alarms, GPS positioning, low battery alarms, and customizable functions. Remote parameter settings are supported.

Key Features:

- ☆ Remote parameter modification (uploading frequency, collection frequency, alarm points)
- ☆ Ultra-low power design with a 3.6V large-capacity lithium battery
- ☆ Supports multiple protocol stacks and message formats
- ☆ Utilizes 4G/NB/LORa network for stable signal and wide coverage
- ☆ Full-screen display

IV: Technical specifications

Range: Conventional range: 0-1.6...2.5...60 MPa
 Overload pressure: ≤10MPa 200%; > 10MPa 150%
 Transmission mode: 4G/NB/LORa
 Accuracy level: 0.5%
 Dial diameter: 76mm
 Power supply voltage: 3.6V lithium battery or DC12V/24V
 Long-term stability: ±0.2%/year (typical value)
 Display and backlight: LCD full screen display
 Working temperature: -40~80
 Compensation temperature: 0~60°C
 Electrical protection: Anti-electromagnetic interference
 Sampling rate: 1~9999 seconds/time optional (default 3 seconds/time)
 Upload rate: 10~9999 minutes optional (recommended 1 hour)
 Alarm point mode: Fluctuation alarm, high and low alarm points can be set
 Interface thread: M20*1.5 NPT1/4 G1/2 or other standard thread
 Product material: 304 stainless steel
 Measurement medium: oil, water, gas and other non-corrosive media
 Storage conditions: temperature (-40~80)
 Humidity (0~95%RH)
 Remarks: NB-iot/4G has IP address setting function

V: Battery Installation & Replacement

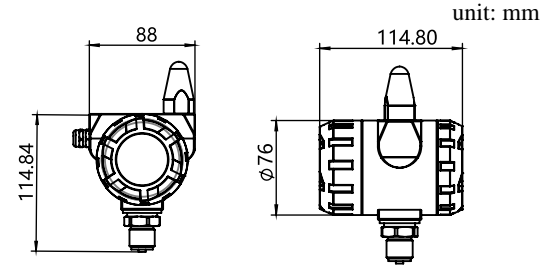
Battery Specification: The product exclusively uses ER34615 lithium battery. Use of other models discouraged.
Safety Precaution: Rechargeable batteries are strictly prohibited due to potential hazards.
Accessory Verification: Product ships with a battery, pre-turned on. Upon receipt, please check for completeness and store in a dry, normal-temperature environment if not immediately installing.

VI: LCD Display Instructions

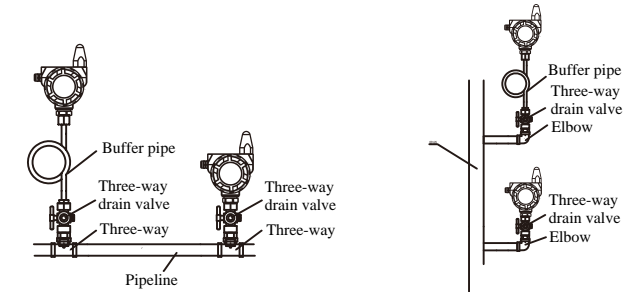


Code	Description
	Device running status
	Battery power status
	External power supply
	Reserve
	Signal Strength
	Pressure unit
	Time display
	Temperature (optional)
	Device failure
	Device alarm status
	Communicating
	Upload progress bar

VII: Dimension

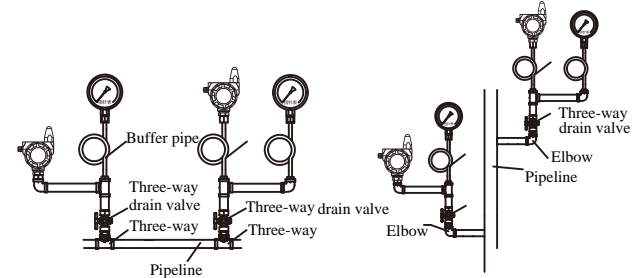


VIII: Installation



Horizontal Pipeline Installation

Vertical Pipeline Installation



Horizontal Pipeline with Analog Gauge

Vertical Pipeline with Analog Gauge

IX: Magnetic Switch Instructions

1. Do not open the front and back covers, avoid waterproof failure.
 2. Turn on: Use a magnet to touch the center of the screen, then remove the magnet immediately.
 3. Turn off: Touch the center of the screen with a magnet for more than 3 seconds. after the word "SHut" appears, remove the magnet.
 4. After normal startup, use a magnet to touch the screen, it will display the number of successful uploads after startup, and the signal strength. At this time, it will trigger a data upload to the platform immediately.
- *Note: If you need to replace the battery, please tighten the front and back covers after opening the cover, and be sure to align the factory locking label to prevent water leakage.

X: Common Problems and Solutions

No.	Fault	Reason	Solution
1	Battery empty	Battery low	Replace battery
2	Pressure does not change	Pressure sensor damaged	Return to factory for repair
3	Display E--H	Pressure exceeds the range	Reduce pressure
		Pressure sensor damaged	Return to factory for repair
4	Pressure changes slowly	Acquisition speed is too low	Increase sampling rate
5	Large intervals for uploading data	The publishing cycle is too long	Shorten upload frequency
		The on-site signal is not good	Improve wireless network
6	No alarm	Turn off the alarm function	Turn on the alarm function and set it appropriately
		Wrong alarm setting	alarm value
7	Server cannot receive data	IP address or port setting error	Modify IP and port settings
		Server database setting error	Modify database files

XI: Error Code and Solutions

No.	Code	Reason	Solution
1	Er01	Module does not respond	Check the battery and the module is loose
2	Er03	IMEI query failed	
3	Er06	SIM card abnormality	SIM card is loose or not installed
4	Er08	No network found	Check if the base station is abnormal
5	Er09	Registration network rejected	Check if the SIM card is deactivated Check the parameters setting
6	Er16	Registration network failed	Check if the SIM card is deactivated Check the parameters setting
7	Er21	Link creation error	Check if the SIM card is deactivated Check IP address
8	Er22	Link close error	Check if the SIM card is deactivated Check IP address
9	Er23	Connection failed	Check if the SIM card is deactivated Check IP address
10	SUCC	Data uploaded successfully	
11	Er30	Protocol error	Check IP address
12	Er31	Protocol registration error	Check IP address Check registration platform
13	> Er33	Protocol 1 sending error	Check registration platform

XII: After-sales Service

After-sales service and warranty terms

1. The product warranty period is 12 months from the date of delivery. If our company's products fail during normal use within 7 days from the date of sale, consumers can choose refunds, exchanges, maintenance and other services. After consumers purchase our products, if there is a failure that is not caused by human damage within one year, they can be repaired free of charge. For consumers who do not meet the free replacement or free warranty service, our company still provides technical services. The purchase time is subject to the invoice or receipt date issued by the dealer.

2. The products are mainly divided into shells, control components and pressure-sensitive components. The shell is not covered by warranty for normal wear and tear, and the shell will not be replaced.

Warranty is not covered for wiring errors or damage to the circuit board caused by excessive load on the control component.

Warranty is not covered for damage to the pressure-sensitive component caused by overpressure or touching the diaphragm with hard objects.

3. The warranty is void if any of the following conditions occur:

- 1) Damage caused by human factors and use in abnormal working environment, failure to use according to the instructions or use in an environment not in accordance with the instructions, etc.;
- 2) Users dismantle, repair, and modify products without the consent of our company;
- 3) Damage caused by poor transportation after purchasing our company's products;
- 4) Damage caused by other force majeure (such as floods, lightning strikes, earthquakes, abnormal voltage);
- 5) Normal wear, tear, cracks, and stains;
- 6) Products that do not belong to our company (such as fakes);

XIII: Manufacturer

Fandee Electronics. Co., Ltd.
Addr: NO.78 KEJI 2 ROAD, XIAN, SHAANXI, CHINA, 710075

W: www.fandesensor.com
E: sales@fandesensor.com
M: +8615902990387