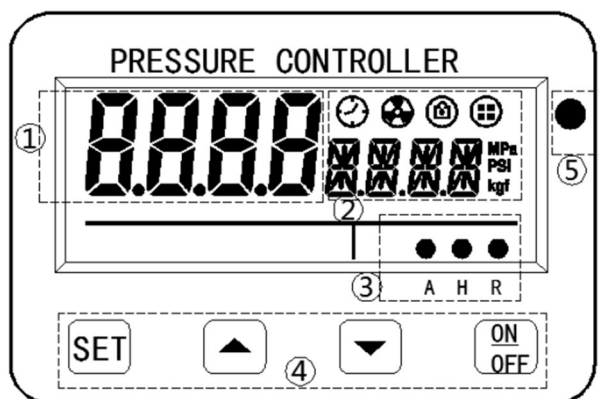


DR630 Series Intelligent Pressure Controller



➤ Panel Description



①Main display screen: display the current pressure, and display function symbol when the parameter is set.

②Secondary display: display setting parameters

③Status indicator:
A: automatic mode,
H: manual mode,
R: running state

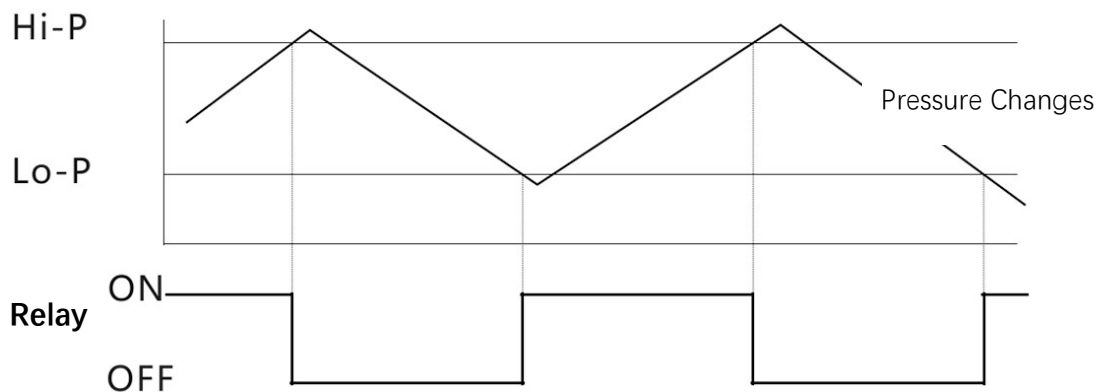
④Key area:

Set: switch and confirm parameters,

Up: increase value,

Down: decrease value,




➤ Relay Working Mode



Hi-P: stopping pressure value of load

Lo-p: starting pressure value of load

DR630 will monitor the pressure in the container in real time and switch on or off according to the set value.

In automatic mode, the relay automatically turns on or off the load according to the set automatic start pressure (lo-p) and stop pressure (Hi-P). When power on, the status is OFF, and it needs to manually press the start/stop button  to run. When the status is ON, the operation prompt  flashes, and when the status is OFF,  always bright.

➤ Operation Method

Adjust the start pressure and stop pressure

Press the "SET" button to check the start pressure and stop pressure. The stop pressure > start pressure.



Press "SET" button, check Hi-P

 Adjust Hi-P reference value, long press to adjust quickly.

Press "SET" button, check Lo-P

 Adjust Lo-p reference value, long press to adjust quickly.

Zero Calibration Function

Zero calibration function refers to the function that the pressure value is forced to display as 0 when the pressure value is more than atmospheric pressure.



Key lock and Unlock function

<Lock>



<Unlock>



Check the relay running time

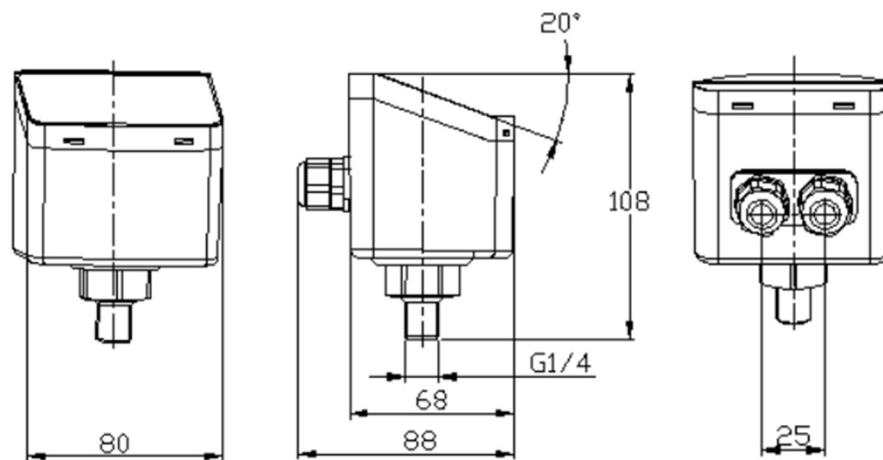


➤ Menu Function

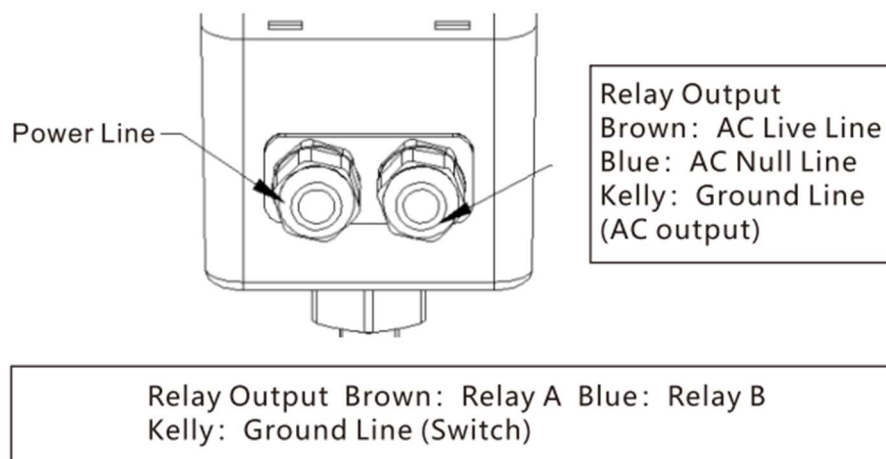
Long press SET, and the function description is as follows:

Function Symbol	Operation	Note
F1 Set working mode	Press , Automatically or manually, set confirms and enters the next function	Automatic: the system automatically controls the load according to the pressure setting; Manual: forced start or stop
F2 Set keyboard lock mode	Press , "EASY" or "CODE", activate password and shift operation, set confirm and enter the next function	In easy mode: directly press lock or unlock keys; Code mode: not only need press keys to unlock, but also need to enter the correct password, initial password: 0000
F3 Unit selection	Press , Unit: MPa, psi or kgf set confirms and returns to main operation state	MPa\PSI\kgf/cm2 default: kgf/cm2
F4 Operation function	Press , "R on" or "R off", set confirms and returns to the main running state	"R on": power on and direct operation "R off": power on requires manual operation (default)

➤ Size




➤ Power Connection



➤ Error Code

Name	Error Code	Error description	Solution
Residual pressure error	Err1	Excessive pressure during zero calibration	During zero calibration, the pressure should be atmospheric pressure
Wrong password	Err5	Password wrong	Input right password
Abnormal pressure	UP	The set value reaches the upper limit	Adjust Hi-P the pressure value.
	DOWN	The set value reaches the lower limit or the stop pressure is lower than the start pressure	Adjust Lo-P the pressure value.

High Pressure	FULL	Actual pressure exceeds the range of the sensor.	Reduce input pressure.
Over-pressure	Indicator always on	Actual pressure > Hi-P value	Reduce input pressure.
Low pressure	Indicator always flash	Missing pressure	Check the tightness or adjust the value of Hi-p and Lo-p
Key Lock	Lock	The key is locked	Press the unlock key to unlock 

➤ Need Help

Email: Jiang@fandesensor.com

TEL/WhatsApp: +8615902990387

Web: www.fandesensor.com