

DR3720 Digital Pressure Gauge



NOTICE

1. After receiving the product, please check the packing and appearance are complete, and check the product types and specifications are same with you choose.
 2. Correct and reliable installation and wiring of the product according to the process connection, electrical connection and installation mode provided by the product.
 3. The product is battery powered, and some products can also be powered by power supply.
 4. Please pay attention to the technical specifications and operating conditions of the product, such as permissible medium temperature, overload pressure, power supply voltage, etc.
 5. The product belongs to precision device. Users should not disassemble the diaphragm by themselves or touch the diaphragm with hard objects so as to avoid damage to the product.
 6. In the process of installation, pay attention to the protection of products, no strong installation or disassemble, or easy to damage products, especially the installation of threads.
 7. Please install or disassemble with the appropriate wrench, don't use strength power to screw the shell to tighten or disassemble, otherwise the damage will not be covered by the warranty.
 8. After boot, it usually takes a few minutes to stabilize the output and work normally, it is a normal phenomenon.
 9. The product is abnormal, unless you have the equipment and skills to adjust the product, please contact our company's after-sales technical personnel.
 10. The installation stress may be affected during installation. After installation, please clear it first and use it again.
- (!)The product damage of unprofessional operation that not according with operation specifications is not covered by the warranty.

WARNING

1. When the ambient temperature is above 60°C, please use a forced fan or cooling machine to cool down.
2. The installation, commissioning and maintenance of the product shall be carried out by qualified engineers and technicians.
3. The product shell is reliably grounded, which is helpful for electromagnetic interference and electrical equipment safe.
4. If the failure or abnormality of the product may lead to a major accident of the system, please set up an appropriate protection circuit outside to prevent the accident.
5. Our company does not undertake any direct or indirect loss other than the product itself.
6. Our company reserves the right to change the product specifications without notice.

DESCRIPTION

The DR3720 is a high-precision intelligent digital pressure gauge, it has a high-precision sensor and display the pressure accurately in real time, it also has the characteristics of high accuracy and good long-term stability. The digital pressure gauge is equipped with 5 bit large size LCD, it has a various of features, such as zero clearing, back-light, on/off button, units, low voltage alarm, peak record. And it is convenient to install and easy to operate. Shell and joint are 304 stainless steel with good shock resistance. It can be used to measure gas, liquid, oil and other non-corrosive mediums of stainless steel.

SPECIFICATION

Pressure range: -0.1-0...1.0...100MPa (refer to selection)

Pressure type: Pressure, Negative pressure, Absolute pressure

Overload capacity: < 10MPa 150%; > 10MPa 120%

Accuracy: $\pm 0.4\%F_s$, $\pm 0.2\%F_s$

Long term stability: 0.2Fs/ Year

Supply voltage: 4.5VDC or USB power

Battery life: 16 months (reference value)

Sampling frequency: 3 times / second

Display screen: 5 digits LCD screen

Back-light color: white

Measuring medium: gas, liquid, oil and other non-corrosive mediums of stainless steel

Electromagnetic compatibility: anti electromagnetic interference design, accord with EN61326

Data memory: permanent EEPROM

Peak record: Yes.

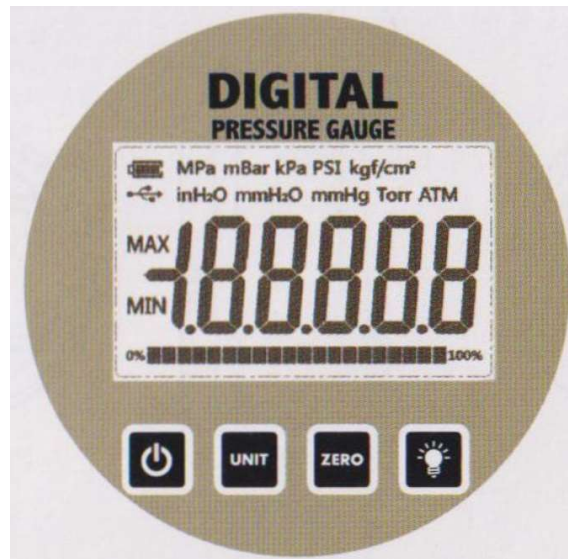
Case material: 304 stainless steel

Interface material: 304 stainless steel

Product features: backlight, on/ off, unit switching, peak recording, pressure percentage display.

KEY NOTE

1. BUTTON DESCRIPTION



BUTTON	DESCRIPTION
POWER	Startup / Shut down
UNIT	Press the button, cyclic switching the pressure unit.
ZERO	Press the button for 4 seconds, Calibration zero error.
LIGHT	Press the button startup / shutdown backlight press for a long time, the back-light always light up.

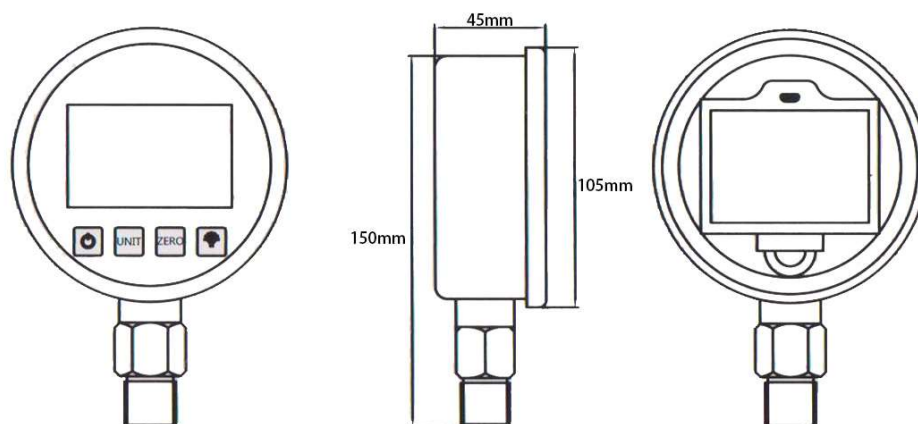
Press the "UNIT" button, Show the maximum /minimum value, corresponding to the MAX/MIN sign light up.

2. LCD



Symbol	Meaning
MPa/PSI/Kgf/cm² /bar/kPa/Pa/mbar inH2O/mH2O/mmHg/Torr/ATM	Pressure unit
MAX MIN	Maximum value Minimum value
0% 100%	Pressure percentage

DIMENSION DIAGRAM



FUNCTION

1. ON/OFF

Press "POWER" button, it is start up, press POWER' button for a long time, it is shut down

2. Unit switching

Press 'UNIT' button, cyclic switching the pressure unit.

3. Zero clearing

Without pressure, press the ZERO' button for 4 seconds to clear zero error.

4. Light

Press the LIGHT' button, back-light opens for 20 seconds. Press the 'LIGHT' button for 3 seconds, the back-light always light up.

5. Adjusting filter constant

Press the LIGHT' + ZERO' button, show r-3, it means the current sampling rate is 3, It can reset by 'ZERO' button, circling setting digital, modify scope 1-10. Finish setting up, press the 'LIGHT' button to exit.

NOTICE: The smaller the number, the quicker the response, the bigger the number, the slower the response, the number is more stable.

PEAK FUNCTION

Press the 'UNIT' button for 4 seconds, show the maximum value of the record after last cleared. Press the 'UNIT' button, switching show the minimum value. Press the 'UNIT' button again, exit record show. When show the MAX value or MIN value, press the 'ZERO' button for 4 seconds, clearing the record, reentering the next recording cycle.

CODE DESCRIPTION

No.	Symbol	Meaning
1	E-E	Sensor communication abnormal or sensor damage
2	E-H	Current pressure exceeds range usage or sensor damage
3	E-P	Enter the pressure calibration procedure accidentally, please turn off and quit.
4	E-C	Enter the temperature compensation procedure, center accidentally, please turn off and quit
5	r-03	Filter constant settings
6	MAX	Maximum mark
7	MIN	Minimum mark

POWER SUPPLY

This product can be powered by battery or USB power.

- 1) Battery, three pieces AA battery
- 2) USB Power, Micro USB, power current $\geq 0.1A$

PROBLEM & SOLUTION

NO.	QUESTION	REASON	SOLUTION
1	Backlight dark	Battery power shortage	Change batteries
2	Battery sign flicker	Battery power shortage	Change batteries
3	Pressure no change	1.Pressure hole blockage 2.Clear zero with pressure 3.Sensor damage	1 Check the pressure hole 2. Zeroing without pressure 3.Depot repair
4	Show E-H	1.Pressure over range 2.Sensor damage	1.Attention not to over pressure 2.Deport repair
5	Digital jump too slow	Adjust current sampling rate	Refer to VII.5
6	Digital jump too quickly	Adjust current adjust current	Refer to VII.5
7	Pressure frequent impact	1 Easy to damage sensor 2 Easy to cause leakage	Add buffer tube
8	High temperature	1.Easily damage gauge 2.Causing pressure deviation	Add heat sink / radiator

AFTER-SALES SERVICE

After sales service and warranty clause

1. The warranty period is 12 months from the date of delivery. Our company's products from the date of sale within 7 days of normal use if there is a failure, consumers can choose refund, exchange, maintenance and other services. After the purchase of our company's products, it will be guaranteed free of charge within one year if there is a non-human damage. For consumers who do not meet free replacement or free warranty services, our company still provides technical services. The time of purchase is based on the invoice issued by distributor or the date of receipt.

2. Products are mainly divided into shell, control elements and pressure sensitive components. The shell is normal wear, use the old, these are not responsible for warranty and replacement. Wiring error or control element damage of excessive load caused by circuit board is not responsible for warranty. Pressure-sensitive original damage caused by over pressure or hard material touching the diaphragm is not responsible for warranty.

3. One of the following circumstances cannot enjoy the "Three Guarantees" service:

- 1) Human factors damage and use in abnormal working environment, failures and damages caused by not using in accordance with the instructions or not accordance with the instructions of using in the environment.
- 2) Without the consent of our company, users disassemble, repair and refit products without permission.
- 3) Damage caused by bad transportation after purchase of our products.
- 4) Damage caused by other force majeure (such as floods, lightning strikes, earthquakes, abnormal voltages).
- 5) Normal using the old, wear, rupture and immersion etc.
- 6) Products that do not belong to our company (such as fake goods).
- 7) Can't show the valid shopping voucher, no warranty card, etc.